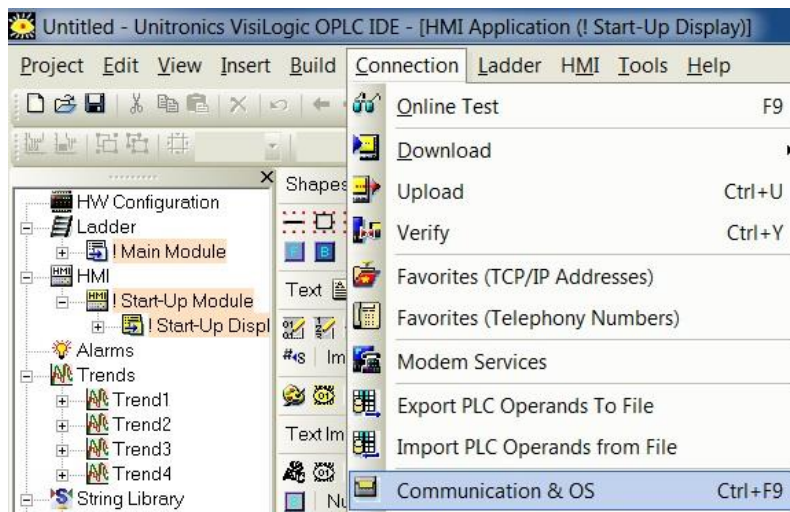
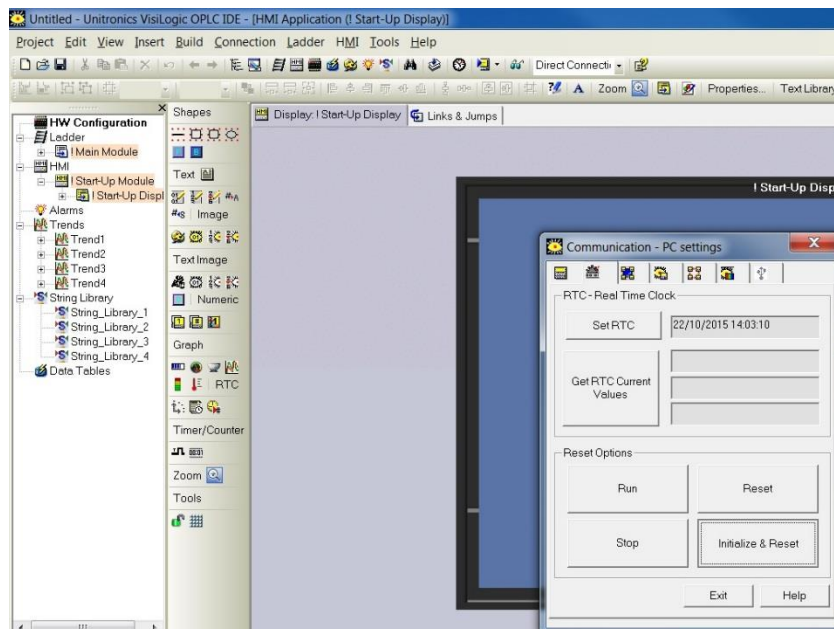


PLC control- Initialize & Reset

Initialize and Reset in Visiologic



1. Connect your PLC and open Visiologic
2. Go to the 'Connection' tab at the top of the page and select 'Communication & OS' or press Ctrl+F9



3. In the new window that appears go to the 2nd tab along the 'functions' tab
4. From here you can send various communications to the PLC, if you would like to initialize and reset the PLC then simply select 'Initialize & Reset'
5. When asked if you would like to continue, check all is ok and select 'Yes'