

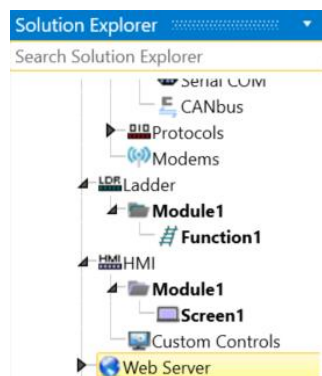
Setting Up Web Server in UniLogic

Setting up a simple Web Server

1. **Set the Panel IP Address (This will be used to access the web server from your browser) –**

IP Settings	
IP address	192.168.1.100
Subnet mask	255.255.255.0
Default gateway	192.168.1.254

2. **Select Web Server from the Solution Explorer -**



3. **Click the green plus sign to enable the Web Server. Note that UniLogic will then automatically open the Web Page editor. However, you can configure additional Web Server properties at any time by clicking Web Server from the Solution Explorer to open the Properties Window.**

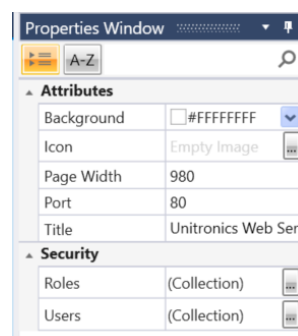
Web Server



Web Server

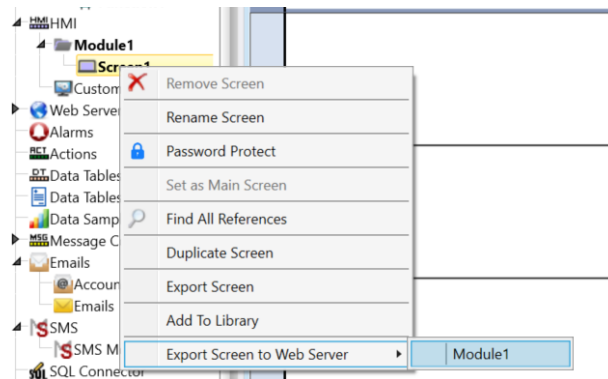
Click to set this PLC as Web Server and to define the Web Pages within the Web S

4. **Use the Properties Window to set general Attributes, such as a default page background, and to configure Security.**

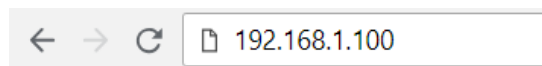


Setting Up Web Server in UniLogic

- You can create web pages by adding elements to the screen in a similar way to how you create HMI pages or turn a whole HMI screen into a web page by right clicking the HMI screen in the solution explorer and selecting 'Export Screen to Web Server'**

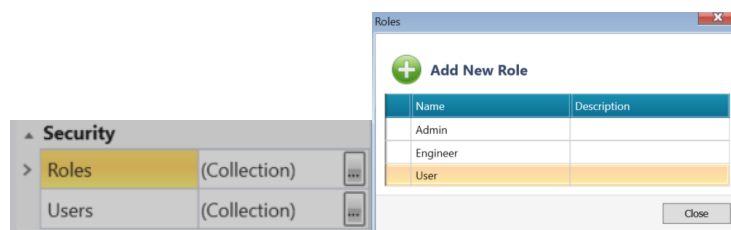


- Enter the panel IP into your browser and you can view the pages you have added to your web server – It really is as simple as that.**

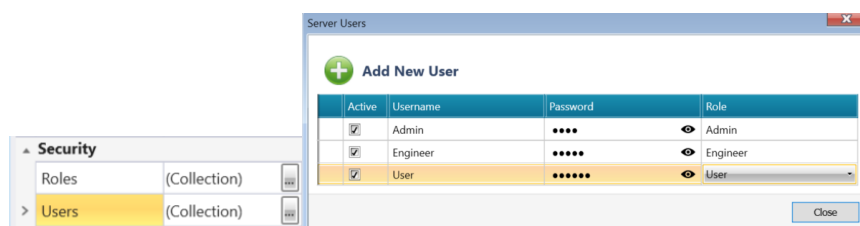


You can also set this up so that users have to enter a password before accessing a web page.

- Create a collection of Roles**

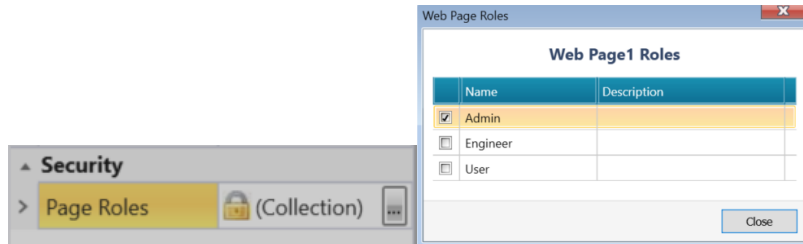


- Create list of Users, assign a Role and a password to each user.**

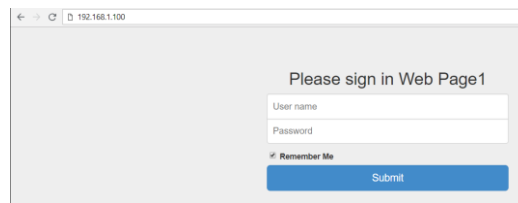


Setting Up Web Server in UniLogic

3. When you design web pages, assign roles to individual web pages according to your requirements. Allowing only certain users to access certain roles.



4. Then when you try to access any web pages you have assigned a role you will be prompted to enter the appropriate Username & Password



Tom Johnson
August 2017