

PID M90/M91

28/9/05

Table of Contents

- PID 1
 - PID Function 1
 - About PID and Process Control 1
 - Inside the PID Function 2
 - Defining a PID function 4
 - PID Function Parameters 5
 - Auto-tuning PID Loops--PID Server 7
- Index 9

PID

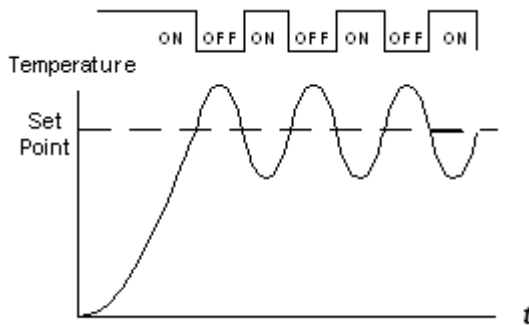
PID Function

The PID function uses system feedback to continuously control a dynamic process. The purpose of PID control is to keep a process running as close as possible to a desired Set Point.

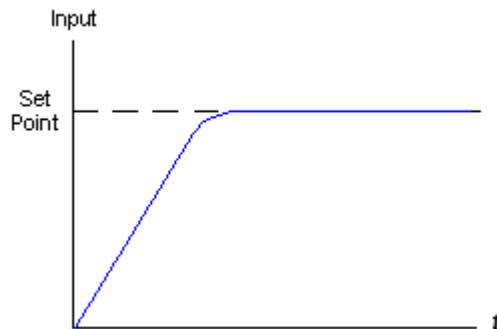
The M90 can run 4 closed PID loops.

About PID and Process Control

A common type of control is On-Off control. Many heating systems work on this principle. The heater is off when the temperature is above the Set Point, and turns on when the temperature is below the Set Point. The lag in the system response time causes the temperature to overshoot and oscillate around the Set Point.



PID control enables you to minimize overshoot and damp the resulting

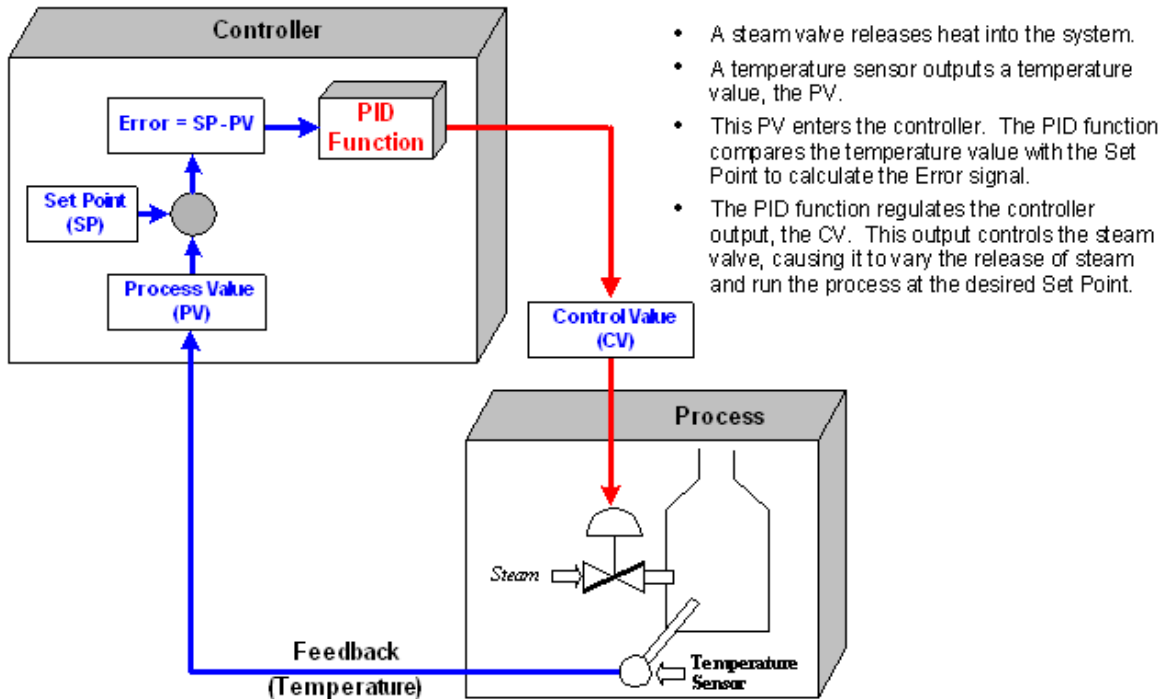


oscillations.

PID enables your controller to automatically regulate your process by:

1. Taking the output signal from the process, called the Process Variable (PV),
2. Comparing this output value with the process Set Point. The difference between the output Process Variable and the Set Point is called the Error signal.
3. Using the Error signal to regulate the controller output signal, called the Control Variable (CV), to keep the process running at the Set Point. Note that this output signal may be an analog or time-proportional variable value.

In the figure below, a system is regulated according to temperature.



Inside the PID Function

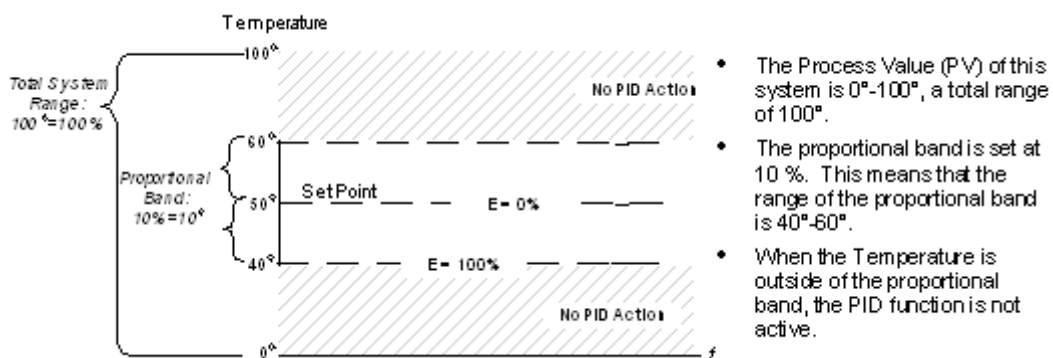
The PID function is based on 3 actions, Proportional, Integral, and Derivative. The PID output is the combined output of all 3 actions.

All of the PID functions are activated by changes in the process Error, the difference between the Process Value and the process Set Point value ($E = SP - PV$).

Proportional Band

The proportional band is a range defined around the Set Point. It is expressed as a percentage of the total Process Value (PV). When the PV is within this range, the PID function is active.

Note that the proportional band may exceed 100%. In this case, PID control is applied over the entire system range.



Proportional Action

Proportional action begins after the PV enters the proportional band; at this point, the Error is 100%. The action outputs a value that is in **direct linear proportion to the size of the Error value**.

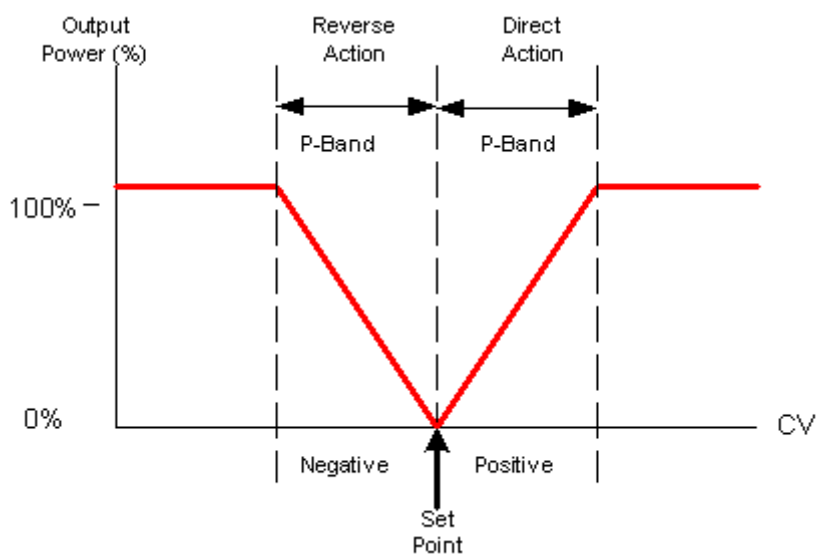
A broad proportional band causes a more gradual initial response from the controller. Typically, Set Point overshoot is low; but when the system stabilizes, oscillations around the Set Point tend to be greater.

A narrow band causes a rapid response that typically overshoots the Set Point by a greater margin. However, the system does tend to stabilize closer to the set point. Note that a proportional band set at 0.0% actually forces the controller into On-Off mode.

The drawback of proportional control is that it can cause the system to stabilize below set point. This occurs because when the system is at set point, Error is zero and the control value output is therefore pegged at zero as well. The majority of systems require continuous power to run at set point. This is achieved by integrating integral and derivative control into the system.

Direct and Reverse Action

Direct action causes the output to change in the same direction as the change in Error, meaning that a positive change in Error causes a positive change in the proportional band's output. Reverse action creates an inverse change in the output, meaning that a positive change in Error causes a negative change in output.

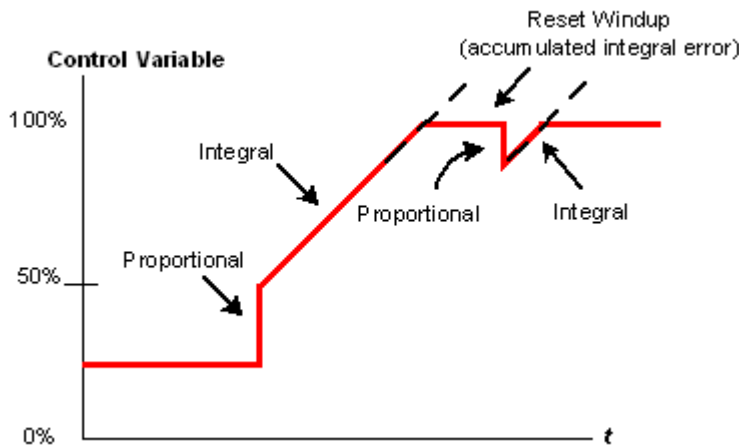


Integral Action

Integral action responds to the rate of change in the controller's CV output relative to the change in Error. The integral time you set is the amount of time, as calculated by the controller, required to bring the process to Set Point. Note that if you set a short integral time, the function will respond very quickly and may overshoot the Set Point. Setting a larger integral time value will cause a slower response. Integral time is sometimes called Reset.

The controller's CV output may reach and remain at 100%, a condition called saturation. This may occur, for example, if the process is unable to reach Set Point. This causes the Error signal to remain stuck in either the positive or negative range. In this situation, the integral action will grow larger and larger as the Error accumulates over time. This is called integral "wind up", which can cause the controller to overshoot the set point by a wide margin.

This situation can be prevented by setting an MB to clear the accumulated Integral error when saturation occurs.



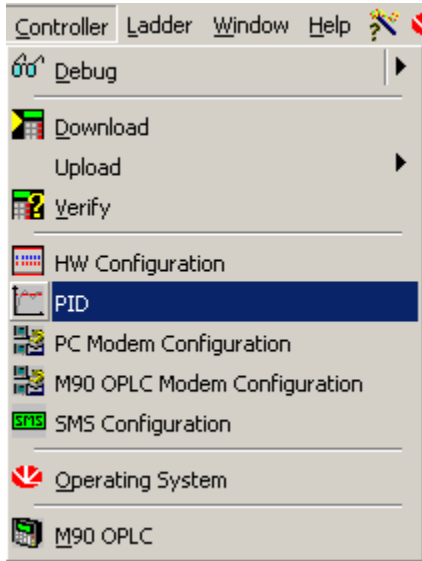
Derivative Action

Derivative action responds to the rate and direction of change in the Error. This means that a fast change in error causes a strong response from the controller.

The derivative action ‘anticipates’ the PV’s value in relation to the Set Point and adjusts the controller’s CV output accordingly, thus shortening the PID function’s response time.

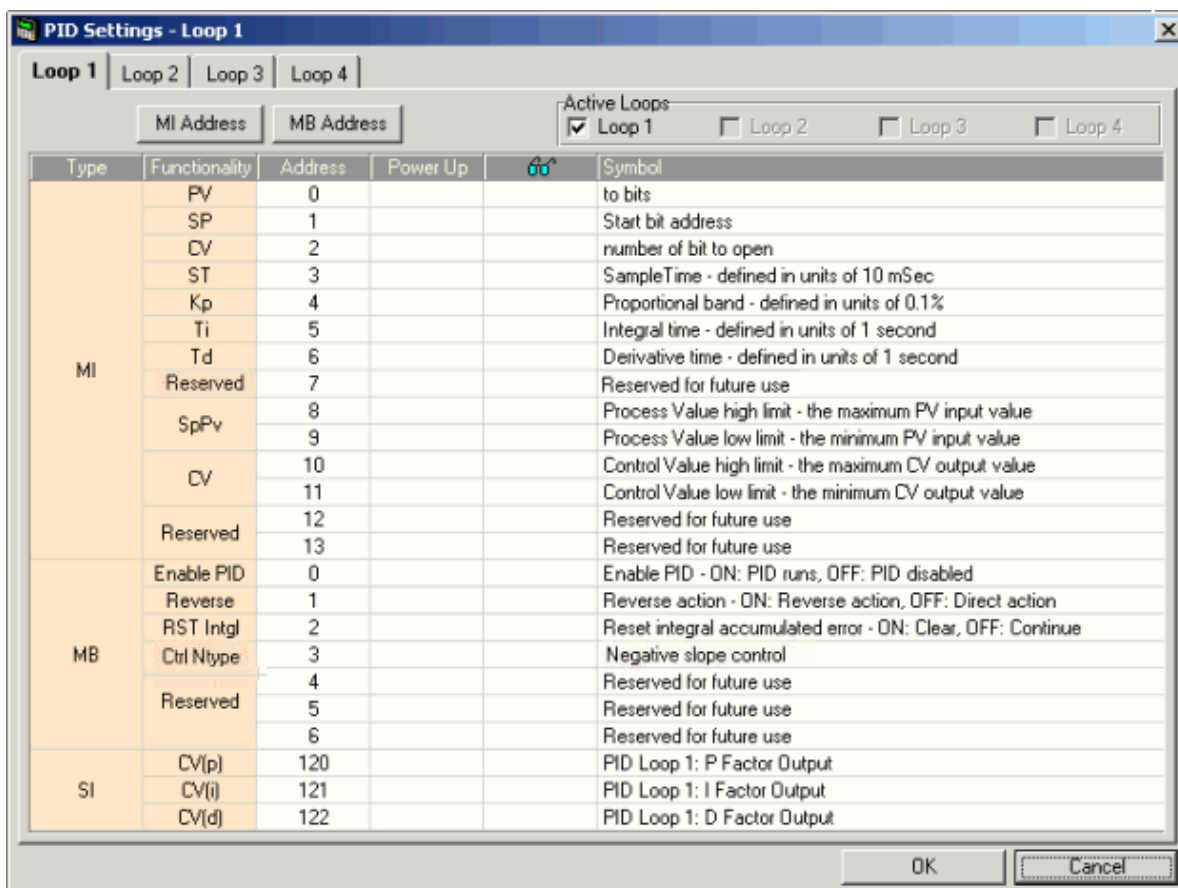
Defining a PID function

1. Select PID from the Controller menu.



The PID parameter box opens as shown below. The parameters are arranged in three groups. Each group is linked to a vector of operands.

2. Link operands to the PID parameters by:
 - Clicking the MI Address or MB Address buttons,
 - OR
 - Clicking a parameter;
 the Select Operand & Address box opens.
3. Enter a vector's Start Address, then click OK; the parameters are linked to operands in that vector.
4. Repeat the procedure for each of the four PID loops.
5. Before you can use a PID loop, you must activate it by clicking the appropriate check box under Active Loops.



PID Function Parameters

Operand Type	Parameters	Function
MI	PV: Process Value	PV is the feedback from the process. PV is output from the process and input to the PID function. In a heating system, the temperature measured by a temperature sensor provides the PV.
	SP: Set Point	SP is the target value for the process. In a heating system, this is the temperature value set for the system. Note that the Set Point and Process value must be given in the same type of units (degrees Celsius, bars, meters per second, etc.)
	CV: Control Value	CV is the output from the PID function. CV is output from the PID function and input to the process. Note that this output signal may be an analog or time-proportional variable value.
	ST: Sample Time	Use this parameter to define the intervals between PID function updates, in units of 10mSecs.
	Kp: Proportional Band	Use this parameter to define the proportional band, in units of 0.1%. The proportional band is a percentage of the total Process Value (PV). It is a range defined around the Set Point. When the PV is within this range, the PID function is active.
	Ti: Integral Time	Use this parameter to define the integral time, in units of 1 second. Integral action responds to the rate of change in the controller's CV output relative to the change in Error. The integral time you set is the amount of time, as calculated by the controller, required to bring the process to Set Point.

	Td: Derivative Time	Use this parameter to define the derivative time, in units of 1 second. Derivative action responds to the rate and direction of change in the Error. This means that a fast change in error causes a strong response from the controller. The derivative action 'anticipates' the PV's value in relation to the Set Point and adjusts the CV accordingly, thus shortening the PID function's response time.
	Reserved	Reserved for future use.
	SPPV: Set Point for Process Value	High: Use this parameter to define the upper limit for the Process Value. Low: Use this parameter to define the lower limit for the Process Value.
	CV: Set Point for Control Value	High: Use this parameter to define the upper limit for the Control Value. Low: Use this parameter to define the lower limit for the Control Value.
	Reserved	Reserved for future use.
MB	Enable PID	Use this parameter in your program to turn the PID loop on and off. ON activates PID action: OFF deactivates PID action.
	Reverse	Use this parameter in your program to control PID output direction. Off activates Reverse Action, ON activates Direct Action. Direct action causes the output value to change in the same direction as the change in PV. Reverse action causes the output value to change in the opposite direction as the change in PV. Note ♦ In the case of a temperature control application, Reverse Action is heating , Direct Action is cooling .
	RST INTGL: Reset Integral Error	Use this parameter to clear integral error. If the system does not reach setpoint within the time defined in the parameter Intgl. Time , Integral error occurs and may increase. Use this parameter to prevent the error from growing large enough to interfere with the Integral operation.
	Ctrl Ntype: Negative slope control	Negative slope control. When the system is 'cooling' down, this helps to control undershoot and stabilize oscillations around the setpoint. When the MB is OFF, Negative Slope Control is ON; when the MB is ON, Negative Slope Control is suspended. For example, in a temperature application, when a heater turns off and the temperature drops sharply, falling below the minimum setpoint (SP), if this MB is OFF, the system will register the sharp drop and turn the heater on before the temperature reaches the low setpoint. The slope of change will be less steep, and the temperature will be more stable around setpoint.
	Reserved	Reserved for future use.
	Reserved	Reserved for future use.
SI	CV(P): Proportional Value	This is the Proportional component of the PID function, calculated by the controller.
	CV(I): Integral Value	This is the Integral component of the PID function, calculated by the controller.

CV(P): This is the Derivative component of the PID function, calculated by the controller.
Derivative Value

Auto-tuning PID Loops--PID Server

You can auto-tune PID loops by using Unitronics PID Server. This utility is located under the Tools menu.

Index

C
CLC control.....1
F
feedback loops.....1

P
PID..... 1
process control..... 1
